



Riverview

Retirement Community

CLOSE TO THE RIVER SOUTH VILLAGE HOME



2309 North Crescent



Updated Appliances,
Back Splash and Counter Tops



Large Living Area, with Vaulted
Ceiling and Skylights



Right Sized Bedrooms with
Plenty of Closet Space

ACCOMODATION FEE \$344,200
SERVICE FEE INCLUDES MAINTENANCE AND GROUNDS KEEPING

Favorite Amenities

- Community Gardens
- RiverBrew Cafe
- Aquatic and Fitness Center
- Centennial Trail Access
- Community Wood Shop
- Dog Parks

Lisa Egger

509-482-8174

legger@riverviewretirement.org



Schedule a Tour Today!

Vivian Bazan

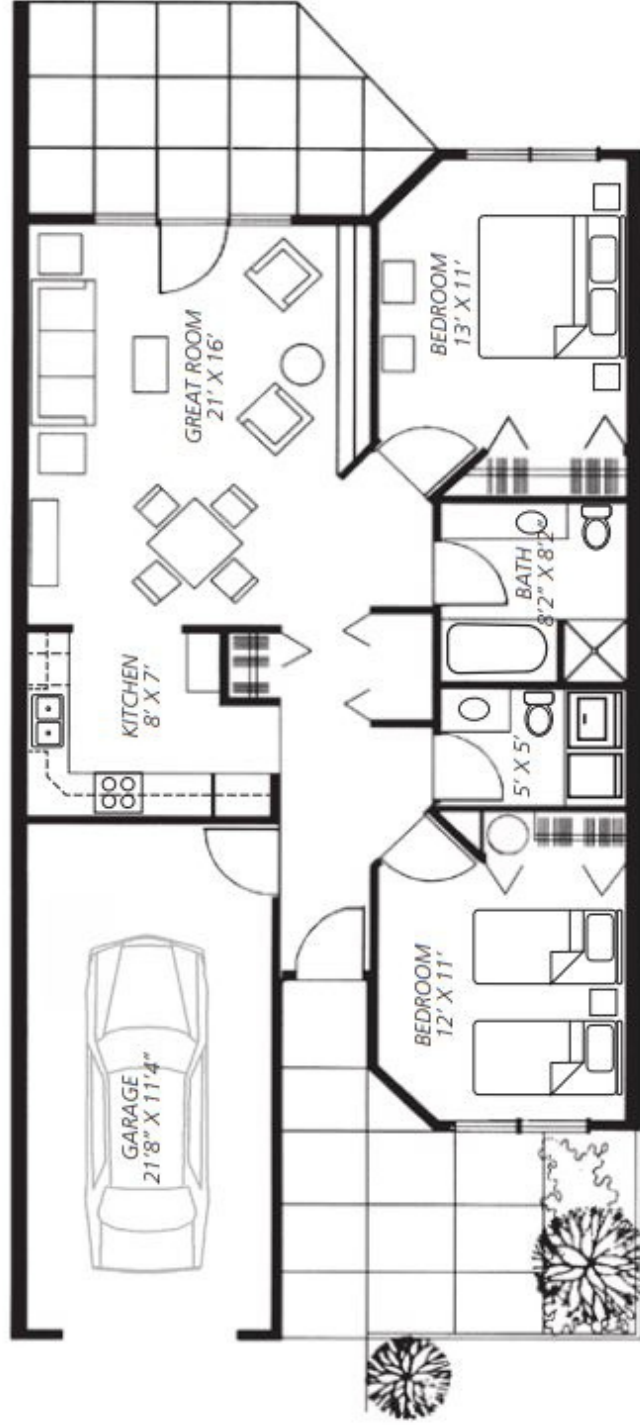
509-482-9588

vbazan@riverviewretirement.org



House Features

- 2 Bedrooms / 1.5 Bathrooms
- 1/2 Bath with Laundry
- Main Bath has Shower and Bathtub
- Updated Kitchen
- Private Back Patio with Peek of the Spokane River
- Pick Your Own New Carpets, Paint and Other Finishings
- 1,030 Square Feet



Village South - 1,030 sq. ft. *livable space*